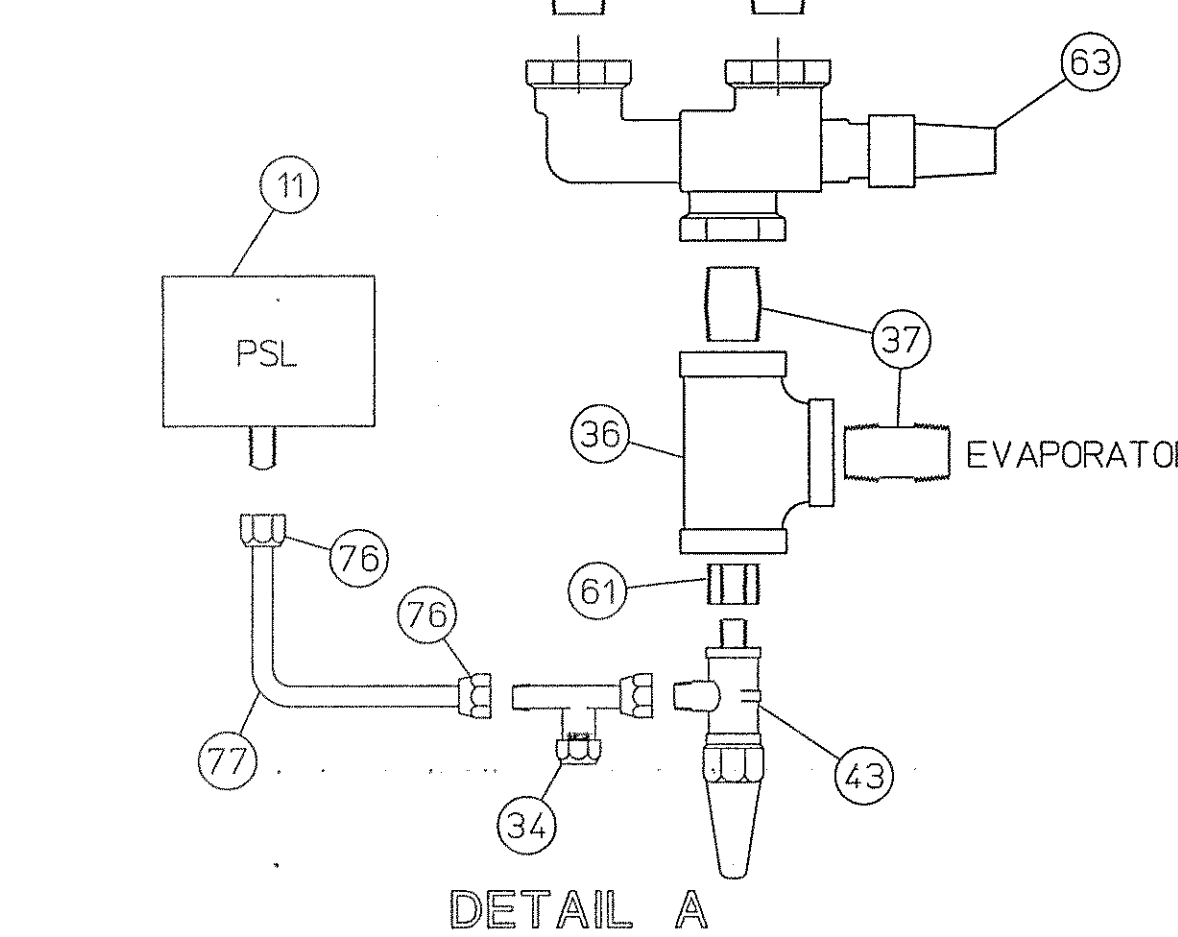
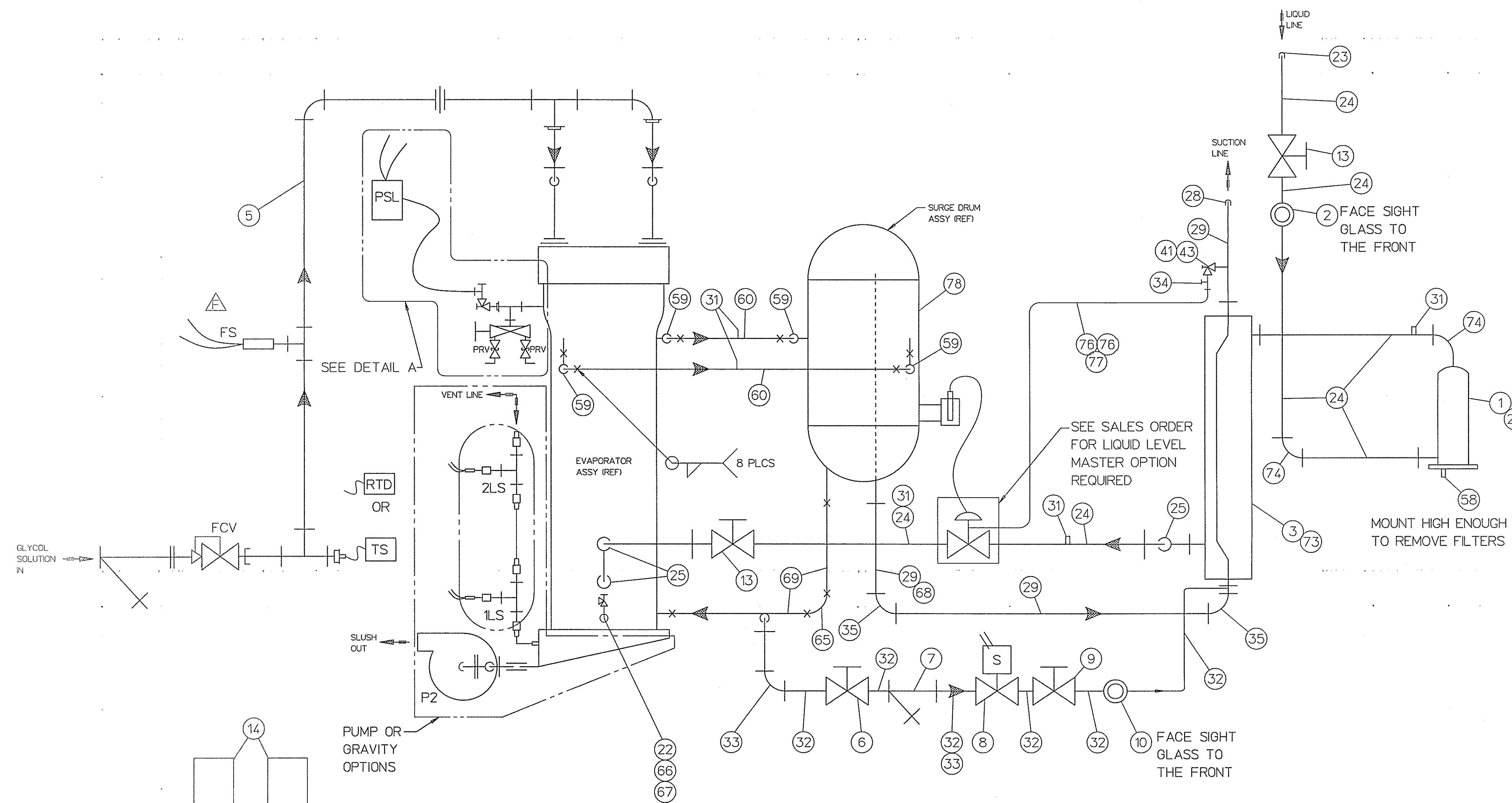


CUST NO.	ITEM NO.	NO. REQD	PART NO.	DESCRIPTION	DRAWING NO.
	75				
	76	4	3023	NUT FLARE .625" SAE BRASS	
	77	48in	3022	TUBE .25"OD .03"W COPPER REFRIGERATION GRADE	
	78	1	9841351	PLUG PIPE 1.25" NPT C/S 3000# SCREWED HEX HEAD ASME SA105	
	79				
	80				

CUST NO.	ITEM NO.	NO. REQD	PART NO.	DESCRIPTION	DRAWING NO.
	1		9840820	PIPING ASSY ORE-100	8200200D
	1		9812370	FILTER-DRIER RFGT 1.625"ODF SPORLAN #C-19213-G	
	2		9812823	GLASS SIGHT 1.625" SPORLAN #SA-213	
	3		9840825	EXCHANGER HEAT ASSY CS 6" OD 4.125"SUC 1.625"LIQ #HES 24078-17.5	
	4				
	5	1	9842628	PIPING ASSY WATER INLET ORE-100	8200386D
	6	1	9813568	VALVE BALL .625"ODS BRASS SUPERIOR #586W-10ST	
	7	1	9813576	STRAINER .625"ODS ANGLE PATT BRASS HENRY #866-.625	
	8	1	9840018	VALVE SOLENOID .625"ODSX.625" ODF SPORLAN #DME14S250 W/24V COIL	
	9	1	9813572	VALVE EXPANSION HAND .625"ODS HENRY #6295N	
	10	1	9813636	GLASS SIGHT .625" SPORLAN #SA-15S	
	11	1	9813792	SWITCH PRESSURE LOW STYLE 5 .25"MF LR 20-100PSI KNOB ADJUST	
	12				
	13	2	9840821	VALVE BALL 1.625" ODS BRASS SUPERIOR #593A-15ST	
	14	2	9840827	VALVE PRESS RELIEF 235PSIG 1"MP T IN X 1"FT OUT HENRY #5244-1	
	15				
	16				
	17				
	18				
	19				
	20	8	9813598	FILTER CORE 3.74"OD 5.5"LG SPORLAN #RC-4864	
	21				
	22	1	9813627	VALVE ANGLE .5"MNPTX.625"FLR MUELLER BRASS #A-13183	
	23	1	31202	CAP COPPER 1.625"CUP MUELLER BRASS #W-7013	
	24	150IN	501919	TUBE 1.625"OD .06"W COPPER TYPE L HARD 20R/L+.25"	
	25	3	9813643	ELBOW CU TUBE 1.625"CUP 90DEG LR MUELLER BRASS #W-2063	
	26				
	27				
	28	1	9811808	CAP COPPER 4.125"CUP MUELLER BRASS #W-7018	
	29	72IN	3549	TUBE 4.125"OD .134"W COPPER HARD TYPE K WALL TOL +-.010" 20R/L	
	30				
	31	4	8822555	FITTING CU .25" SCHRADER STEP .375" OD .25" ODF	
	32	32IN	501927	TUBE .625"OD .049"W COPPER 20R/L	
	33	2	9819956	ELBOW CU TUBE .625"CUP 90DEG LR MUELLER BRASS #W-2722	
	34	2	8801191	TEE SWIVEL .25"FLARE 1 END MALE FLARE W/ SCHRADER FITTING	
	35	2	9813816	ELBOW CU TUBE 4.125"CUP 90DEG LR MUELLER BRASS #W-2095	
	36	1	9840823	TEE CS 1" NPT 3000# SCREWED SA105 PER ANSI B16.11	
	37	2	9840824	NIPPLE CS 1" NPT CLOSE SCH40 SA106	
	38				
	39				
	40				
	41	1	9823781	ADAPTER BRASS TUBE .25"ODX .25"FT MUELLER BRASS #W-1206	
	42				
	43	2	9813616	VALVE ANGLE .25"MNPTX.25"FLR MUELLER BRASS #A-11031	
	44				
	45				
	46				
	47				
	48				
	49				
	50				
	51				
	52				
	53				
	54				
	55				
	56				
	57				
	58	1	9813516	UNION BRASS .25"FLRX.25"MP T W/SEAL CAP MUELLER BRASS #AVU-45R	
	59	4	9840866	ELBOW CS 6"BW 90DEG SCH 40 SR ANSI B16.9	
	60	72IN	1530070	PIPE 6" SCH 40 CS PE SA53 GR B 20R/L	
	61	1	9840829	BUSHING BI 1"X.25" NPT 2000# HEX SCREWED	
	62				
	63	1	9813619	VALVE 3-WAY DUAL SHUT-OFF 1"FNPT FORGED STEEL HENRY #8024	
	64				
	65	1	9803454	ELBOW CS 4"BW 90DEG SCH 40 LR SA234 GRADE WPB (ANSI B16.9)	
	66	1	3101	NUT FLARE .625" SAE BRASS	
	67	1	8801184	BONNET SEAL COPPER .625" FLR MUELLER BRASS #A-485	
	68	1	9821666	COUPLING CU TUBE 4.125"CUP W/O STOP MUELLER BRASS #W-1913	
	69	24IN	1530062	PIPE 4" SCH 40 CS PE SA53 GR B 20R/L	
	70				
	71				
	72				
	73	1	9812577	BOLT U .625-11NC 6.75"ID 9.375"LG ZINC PLATED W/ NUTS	
	74	2	9813651	ELBOW CU TUBE 1.625"FTGX 1.625"CUP 90DEG LR MUELLER BRASS #W-2355	



**LIQUID LEVEL MASTER OPTIONS**

OPTION P/N	VALVE P/N (REF)	VALVE DESCRIPTION	SIZES INLET & OUTLET FLANGE
9840863	9840554	LMC-VVE-100 W/ 15W 24VOLT HTR	1 3/8" ODF 1 3/8" ODF
9840864	9840555	LMC-WVE-135 W/ 15W 24VOLT HTR	2 1/8" ODF 2 1/8" ODF

ABBREVIATIONS	
FCV	SOLUTION FLOW CONTROL VALVE
FS	SOLUTION FLOW SWITCH
LS	VENT LINE OVERFLOW LEVEL SWITCH
TS	TEMPERATURE SWITCH
P2	SLUSH PUMP
PRV	EVAPORATOR PRESSURE RELIEF VALVE
SV	SERVICE VALVE
PSL	PRESSURE SWITCH LOH

- NOTES:**
- VALVES MUST BE COOLED DURING SOLDERING. LOOSEN PACKING NUT OF STEM TYPE VALVES DURING SOLDERING AND TIGHTEN AFTER VALVES HAVE COOLED.
  - LEAK TEST AND DEHYDRATE PER DA-813.
  - ALL TUBING PARTS & FITTINGS MUST BE FREE OF GREASE, OIL, CHIPS, BURRS, & DIRT. INTERIOR MUST BE CLEAN & BRIGHT PRIOR TO ASSEMBLY.
  - SILVER SOLDER ALL COPPER TO STEEL AND ALL COPPER TO BRASS WITH UNITED SL-BOND 45. SILVER SOLDER ALL COPPER TO COPPER WITH UNITED PHOSON 6.
  - THE ENTIRE PIPING ASSY NEEDS TO BE INSULATED WITH 3/4" THK ARMAFLEX.
  - DRILL AND SOLDER 5/8" TUBING INTO ELBOW AT OIL RETURN LOOP TO HEAT EXCHANGER CONNECTION.
  - UNITS TO BE EVACUATED THEN DRY CHARGED TO 5-10 PSIG WITH NITROGEN FOR SHIPMENT.
  - SHIP ITEM #20 LOOSE. DON'T OPEN CAN THAT CONTAINS FILTER.
  - CUT OFF SUCTION LINE CAP FROM THE TANK ASSY AND EVAPORATOR.
  - SET PRESSURE SWITCH AT 32 PSI.

J	DEL ITEM #4	PAG	7-31-00
H	REMOVED PVC (WATER INLET) ADD ITEM #5	PAG	5-11-99
G	DEL ITEM #26 (3200226) #40 (9827791) #27 QTY WAS 32. #42 QTY WAS 28	PAG	1-11-99
F	#16 WAS 9840241 ADDDED ITEMS #78 & 80	PAG	8-31-98
E	ADD #75-78 DEL #48 (3200041) #5 (9840968) #79 #80 #81 #42 QTY WAS 12	PAG	8-13-98
D	ADD #54 #82 ITEM #2 QTY WAS 2 #35 QTY WAS 3. #68 QTY WAS 3 #82 WAS 9809032	PAG	1-23-98
SYM	CHANGE	BY	DATE

C	#30 WAS 9803327.	TAJ	8-28-97
B	ADDED DET A & ITEM #34	PAG	6-24-97
A	DEL #62 ITEM #20 QTY WAS 8 #25 QTY WAS 5 #26 QTY WAS 8 #27 QTY WAS 12 #32 QTY WAS 24 #33 QTY WAS 2 #45 QTY WAS 14 #46 QTY WAS 7 #47 QTY WAS 50 #48 QTY WAS 3205042 #55 WAS 9840322 #56 #74 #57 WAS 98403326	PAG	6-13-97
SYM	CHANGE	BY	DATE

ALL MATERIALS OR COMPONENT PARTS CALLED OUT ON THIS DRAWING SHALL BE AS SPECIFIED OR APPROVED EQUAL.

THIS DRAWING AND ANY PRINT THEREOF IS THE PROPERTY OF THE PAUL MUELLER CO. Springfield, Mo., and is subject to return on request of this company. The information shown is confidential and the recipient by accepting this drawing agrees not to use any information contained herein in any manner which will be detrimental to the PAUL MUELLER CO.

DRAWN BY P. GARNER  
DATE 12-11-96  
REVIEWED BY DUKE GALLT  
DATE 1-27-97

SALES ORDER MODEL(S) Maximize  
SCALE NTS  
ORE-100 R-22

PAUL MUELLER COMPANY  
P. O. BOX 878 / SPRINGFIELD, MISSOURI 65801-0878, U.S.A.

TITLE PIPING ASSY R-22  
DRAWING NO. 8200200